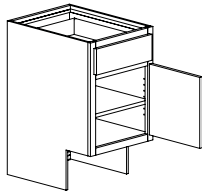
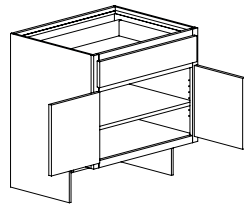


Standard Base

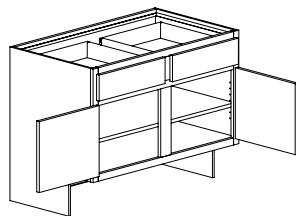
32 1/2" High
8 1/2" High x 6 1/2" Deep Toekick



Single Door
Specify Hinge (L or R)
1 Drawer
1 Adjustable Shelf
UB9 UB18
UB12 UB21
UB15 UB24



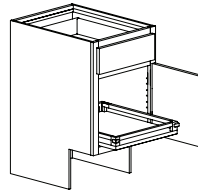
Butt Doors
1 Drawer
1 Adjustable Shelf
UB27 UB33
UB30 UB36



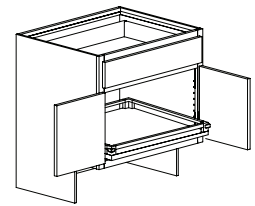
Double Doors
2 Drawers
1 Adjustable Shelf
UB39 UB45
UB42 UB48

Base with Roll Trays

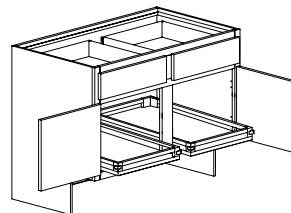
32 1/2" High
8 1/2" High x 6 1/2" Deep Toekick



Single Door
Specify Hinge (L or R)
1 Drawer
1 Roll Tray
UB15RT1
UB18RT1
UB21RT1
UB24RT1



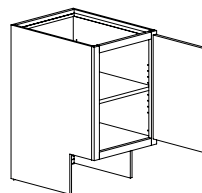
Butt Doors
1 Drawer
1 Roll Tray
UB30RT1
UB36RT1



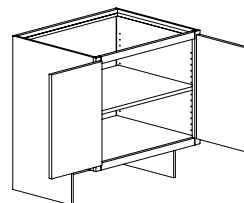
Double Doors
2 Drawers
2 Roll Trays
UB42RT2
UB48RT2

Base with Full Height Doors

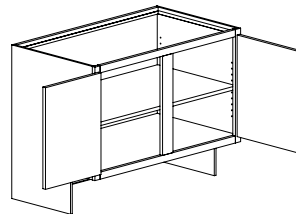
32 1/2" High
8 1/2" High x 6 1/2" Deep Toekick



Single Door
Specify Hinge (L or R)
1 Adjustable Shelf
UB9FHD UB18FHD
UB12FHD UB21FHD
UB15FHD UB24FHD



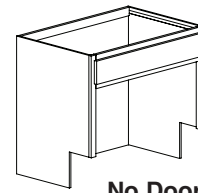
Butt Doors
1 Adjustable Shelf
UB27FHD UB30FHD
UB33FHD UB36FHD



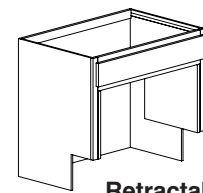
Double Doors
1 Adjustable Shelf
UB42FHD UB48FHD

Base Sink

No Drawers, No Shelves,
Matching Melamine Interior
32 1/2" High
8 1/2" High x 6 1/2" Deep Toekick



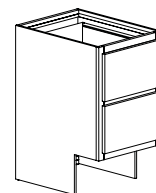
No Doors
LUBS33A
LUBS36A



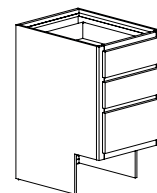
Retractable Doors
LUBS33B
LUBS36B

Drawer Base

32 1/2" High
8 1/2" High x 6 1/2" Deep Toekick



2 Drawer Base
UB2D12
UB2D15
UB2D18
UB2D21
UB2D24

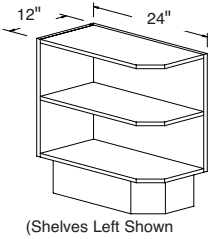


2 Drawer Base
UB3D12
UB3D15
UB3D18
UB3D21
UB3D24

UNIVERSAL CABINETS

Base End Shelf Angled

32 1/2" High
8 1/2" High x 6 1/2" Deep Toekick

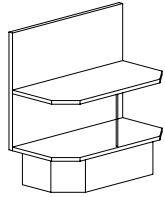


UBESAL (Shelves Left)
UBESAR (Shelves Right)

(Shelves Left Shown)

Base Half Round Angled

12" Deep x 22 1/2" Wide x 32 1/2" High
8 1/2" High x 6 1/2" Deep Toekick



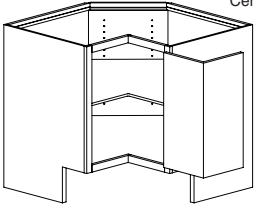
UBHRA

Base Square Corner

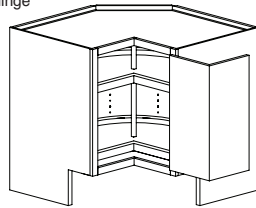
Specify Hinge (L or R)

32 1/2" High
8 1/2" High x 6 1/2" Deep Toekick

Doors Connected At
Center With Knife Hinge



1 Adjustable Shelf
UBSC36

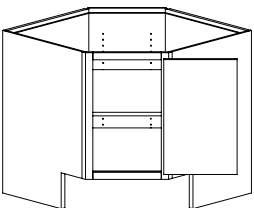


2 Independently Rotating
Lazy Susan Trays
UBSCLS36

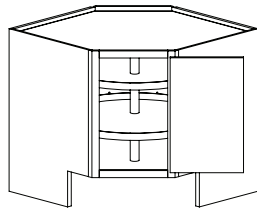
Base Diagonal Corner

Specify Hinge (L or R)

32 1/2" High
8 1/2" High x 6 1/2" Deep Toekick



1 Adjustable Shelf
UBDC36



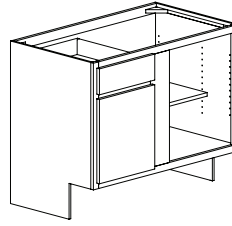
2 Independently Rotating
Lazy Susan Trays
UBDCLS36

DESIGN NOTE: DO NOT use next to an appliance.

Blind Base Corner

Can be Pulled 3"
(Recommended for clearance of
hardware on adjacent cabinets.)

32 1/2" High
8 1/2" High x 6 1/2" Deep Toekick



Blind Shown is Right.
Door Hinged on Blind Side.

Single Door

Door Hinged on Blind Side

1 Drawer

1 Adjustable Shelf

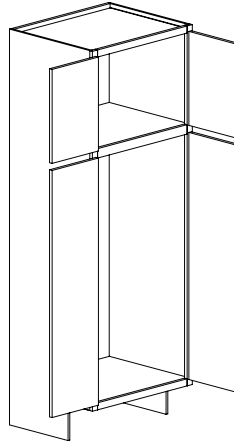
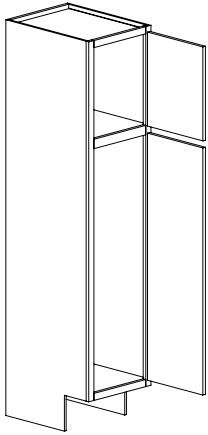
Minimum Wall
Space Required
Traditional **Full Overlay**

Blind Right	Blind Left	Traditional	Full Overlay
UXBC36BR	UXBC36BL	36	37 1/2
UXBC39BR	UXBC39BL	39	40 1/2
UXBC42BR	UXBC42BL	42	43 1/2
UXBC45BR	UXBC45BL	45	46 1/2
UXBC48BR	UXBC48BL	48	49 1/2

Broom Cabinet

No Shelves

8 1/2" High x 6 1/2" Deep Toekick



Specify Hinge (L or R)
on Single Door Cabinets

**24" Deep
Single Door**
UBR158424
UBR188424
UBR248424
Butt Doors
UBR308424
UBR368424

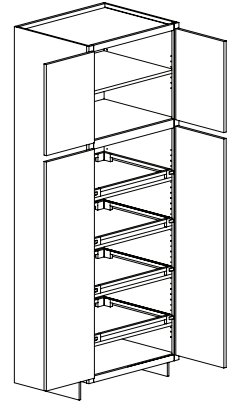
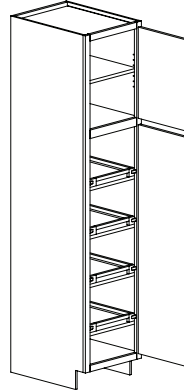
**12" Deep
Single Door**
UBR158412
UBR188412
UBR248412
Butt Doors
UBR308412
UBR368412

Utility Cabinet Style B

1 Adj Shelf

4 Roll Trays

8 1/2" High x 6 1/2" Deep Toekick



Specify Hinge (L or R)
on Single Door Cabinets

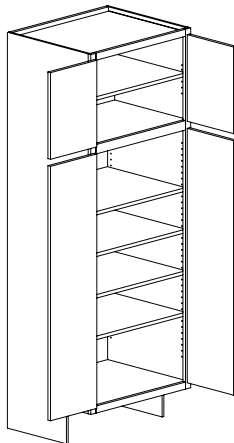
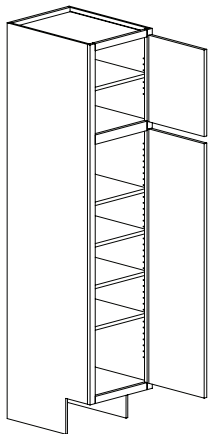
**24" Deep
Single Door**
UUT158424B
UUT188424B
UUT248424B

**24" Deep
Butt Doors**
UUT308424B
UUT368424B

Utility Cabinet Style A

5 Adj. Shelves

8 1/2" High x 6 1/2" Deep Toekick



Specify Hinge (L or R)
on Single Door Cabinets

**24" Deep
Single Door**
UUT158424A
UUT188424A
UUT248424A
Butt Doors
UUT308424A
UUT368424A

**12" Deep
Single Door**
UUT158412A
UUT188412A
UUT248412A
Butt Doors
UUT308412A
UUT368412A