

Laminate
Finishes

Bourbon
Street

Coastal
Grey

Cocobala

Khayawood

Portabella

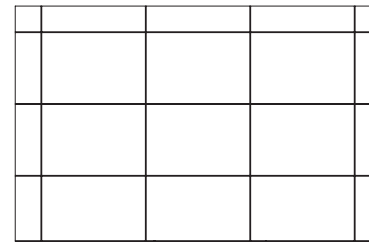
Adams Casegoods Collection

Features include:

- High pressure laminate
- Several finish color options
- Heavy duty drawer glides
- High quality durable finish
- Made in the U.S.A.
- Customizable

adams

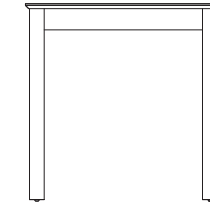
casegoods collection



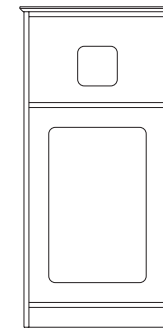
headboard
 full: 56" w x 1.5" d x 36" h
 queen: 62" w x 1.5" d x 36" h
 king: 78" w x 1.5" d x 36" h
 1/8" grooved, wall hung,



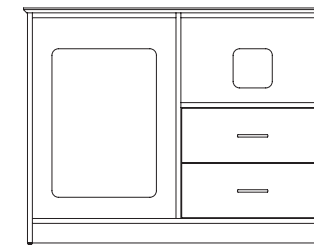
desk
 47.5" w x 23.75" d x 30" h
 solid wood legs, high pressure laminate
 top with solid wood edge,
 ships knockdown



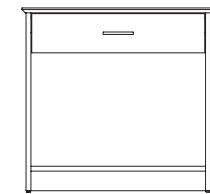
tables
 23.75" w x 23.75" d x 23" h
 30" w x 30" d x 30" h
 34" w x 20" d x 18" h
 solid wood legs, high pressure laminate
 top with solid wood edge,
 ships knockdown



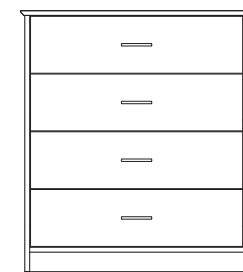
micro/fridge
 23.75" w x 23.75" d x 48.5" h
 microwave opening:
 21" w x 21" d x 13" h
 refrigerator opening:
 21" w x 21" d x 29.5" h
 recessed back, high pressure laminate top
 with solid wood edge



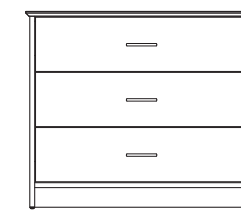
micro/fridge combo left
 47.5" w x 23.75" d x 36" h
 microwave opening:
 22" w x 21" d x 13" h
 refrigerator opening:
 22" w x 21" d x 30.75" h
 2 plywood drawer boxes, recessed back,
 high pressure laminate top with
 solid wood edge



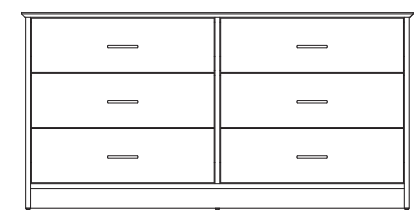
nightstand
 21.5" w x 15.75" d x 24" h
 21.5" w x 15.75" d x 28" h
 29.5" w x 15.75" d x 24" h
 29.5" w x 15.75" d x 28" h
 1 plywood drawer with ball bearing
 glides, recessed back, high pressure
 laminate top with solid wood edge



chest
 35.5" w x 23.75" d x 40" h
 4 plywood drawers with ball bearing
 glides, recessed back, high pressure
 laminate top with solid wood edge



chest
 30" w x 23.75" d x 30" h
 35.5" w x 23.75" d x 30" h
 3 plywood drawers with ball bearing
 glides, recessed back, high pressure
 laminate top with solid wood edge



dresser
 60" w x 23.75" d x 30" h
 6 plywood drawers with ball bearing
 glides, recessed back, high pressure
 laminate top with solid wood edge

Laminate options: bourbon street, cocobala, coastal grey, khayawood, portabella
 Hardware: stainless steel bar pull or satin nickel knob

adams